



Social Mining & Big Data Analytics

SoBigData

Challenge Us! 2021

An initiative to help small and medium sized companies to manage their (big) data problems

Pan-European, Multidisciplinary Research Infrastructure

SoBigData is a distributed, Pan-European, multi-disciplinary research infrastructure for big social data analytics, aimed at using social mining and big data to understand the complexity of our contemporary, globally-interconnected society

Aims

- execution of complex social mining processes
- concrete tools to operationalize ethics with value-sensitive design, incorporating values and norms for privacy protection, fairness, transparency and pluralism
- collaborations with industries to develop pilot projects and proofs-of-concept and in this way accelerate data-driven innovation



United Kingdom

USFD - The University Of Sheffield
KCL - King's College London

Netherlands

UvA - The University Of Amsterdam
TU Delft - Technische Universiteit Delft
EGI - Stichting EGI

Belgium

RIE - Re-Imagine Europa

Austria

CEU - Közép-európai Egyetem

Switzerland

ETHZ - Eidgenössische Technische Hochschule Zürich

France

PSE - Paris School of Economics
CNRS - Centre National de la Recherche Scientifique

Spain

URV - Universitat Rovira i Virgili
BSC - Barcelona Supercomputing Center
UPF - Universitat Pompeu Fabra

Sweden

KTH - Kungliga Tekniska Högskolan

Estonia

UT - University of Tartu
STACC - Software Technology and Applications Competence Center

Germany

FRH - Fraunhofer-Gesellschaft
LUH - Leibniz Universität Hannover

Finland

AALTO - Aalto University

Bulgaria

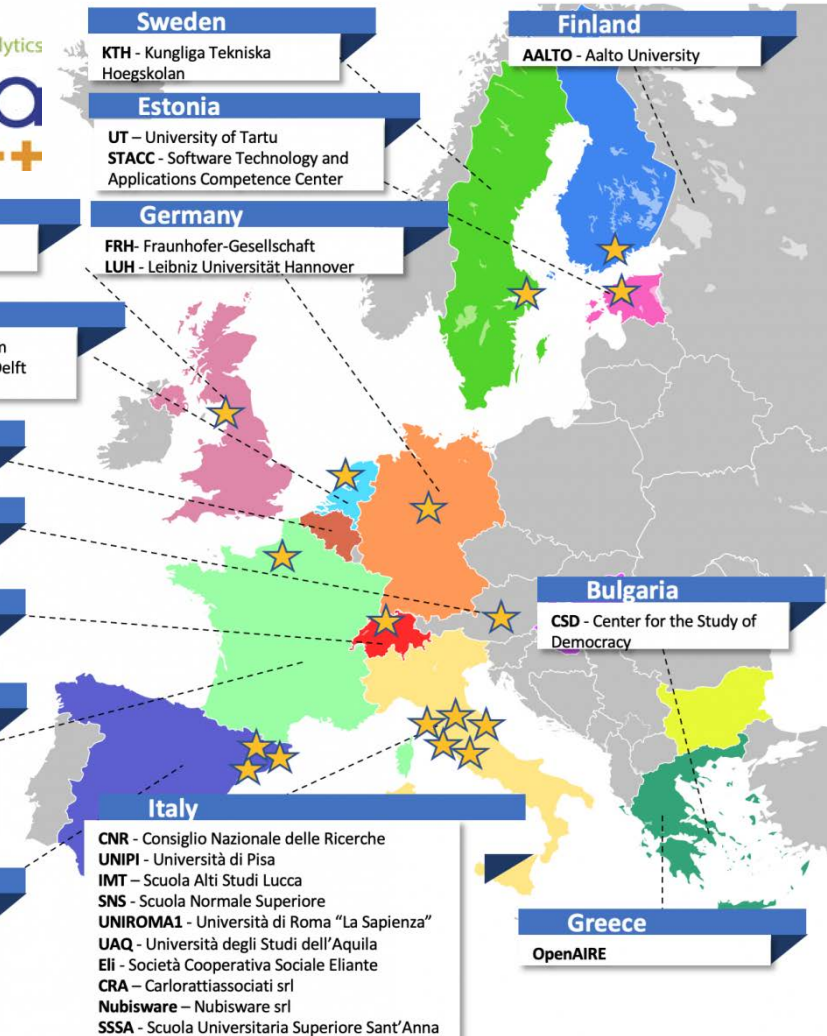
CSD - Center for the Study of Democracy

Italy

CNR - Consiglio Nazionale delle Ricerche
UNIPI - Università di Pisa
IMT - Scuola Alti Studi Lucca
SNS - Scuola Normale Superiore
UNIROMA1 - Università di Roma "La Sapienza"
UAQ - Università degli Studi dell'Aquila
Eli - Società Cooperativa Sociale Eliante
CRA - Carlorattiassociati srl
Nubisware - Nubisware srl
SSSA - Scuola Universitaria Superiore Sant'Anna

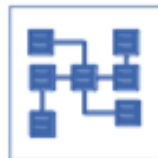
Greece

OpenAIRE



Three lines of activity

1. Networking



- **Community building**
- **Dissemination**
- **Training**

2. Access



Virtual Access (VA) **6500+ users**

- Online front-end
 - Resource Catalogue
 - Virtual Research Environments
 - E-learning area



TransNational Access (TNA)

On-site accesses for targeting research questions.

3. Joint Research

Joint Research

80+ social mining methods

6 thematic clusters:

- *Text and Social Media Mining (TSMM);*
- *Social Network Analysis (SNA);*
- *Human Mobility Analytics (HMA);*
- *Web Analytics (WA);*
- *Visual Analytics (VA);*
- *Social Data (SD).*

80+ big datasets

6 applications

6 exploratories

Exploratories



Societal Debates and
Online Misinformation



Demography, Economics
& Finance 2.0



Sustainable Cities for Citizens



Migration Studies



Sport Data Science



Social Impact of Artificial
Intelligence and
Explainable Machine
Learning

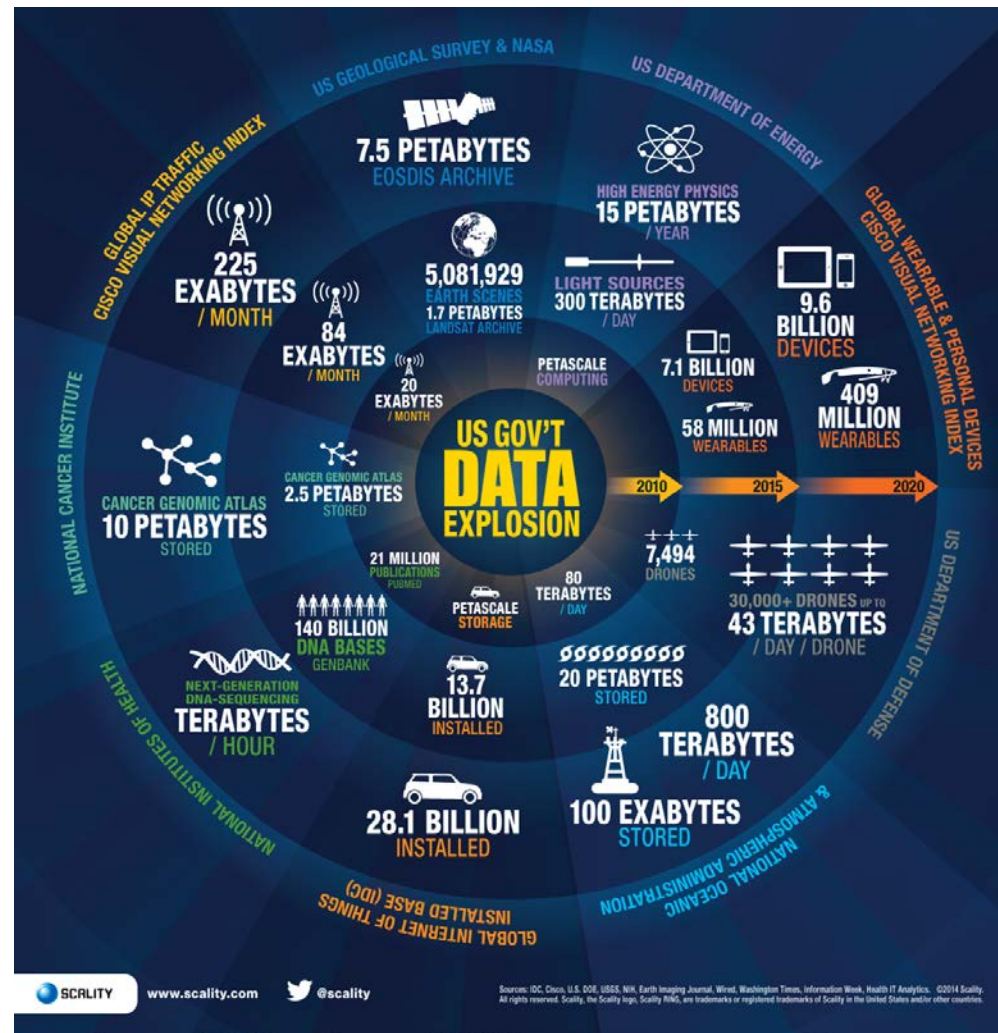
Social Mining & Big Data Analytics

SoBigData Challenge Us! 2021

This is the data-gen!

Every step we take, we produce data. To harness this huge amount of data and create value from them, firms need to design and execute their data strategy meticulously.

Lot of organisations have managed to get a grip on their internal data and have implemented tools and techniques to streamline, monitor, analyse and utilise this internal data.



SoBigData Challenge Us! 2021

What is

The Challenge Us program provides opportunities to companies that would like to gain greater benefit from the data they bring for analysis, to **enter the world of Big Data and exploit its potential.**

The selected companies will be able to benefit from free support of a team of data scientists from the SoBigData++ and will be able to use the **methodologies and software tools available on SoBigData++ big-data analysis platform.**



Who and How

How to participate?

To participate, just fill the form that you find in the webpage (<http://www.sobigdata.eu/challenge-us-2021>) send it to challengeUS@sobigdata.eu, from **March 15 to May 15, 2021.**

Who is selected?

Projects will be selected by the scientific committee of the SoBigData++ who will evaluate the proposals both from the point of view of scientific interest, and feasibility.

How will company data be protected?

The collaborative project will include the signing of a confidentiality agreement (NDA) to protect the information and data that companies will share with researchers. The results obtained in this activity will remain the property of the company.

Social Mining & Big Data Analytics

SoBigData Challenge Us! 2021



*Project Proposal
Submission*

Deadline:
15 May 2021



*Notification to
winners*

Outcome:
1° July 2021



Project Execution

Execution:
15 July - 15 Oct. 2021



*Demonstration at
Challenge Us Event*

Event:
11 November 2021

The logo features a horizontal row of five colored squares (dark green, medium green, light green, dark green, orange) to the left of the text "Social Mining & Big Data Analytics". Below this, the words "SoBigData" are written in a large, bold, sans-serif font, with "So" and "Data" in blue and "Big" in light green. Underneath, "Challenge Us!" is written in a blue, handwritten-style font, and "2021" is written in an orange, handwritten-style font.

Social Mining & Big Data Analytics

SoBigData

Challenge Us! 2021

For more information please visit:

<http://www.sobigdata.eu/challenge-us-2021>